



COMUNE DI OULX

VARIANTE DI REVISIONE GENERALE AL P.R.G.C. VERIFICHE DI COMPATIBILITA' IDRAULICA ED IDROGEOLOGICA

PROGETTO DEFINITIVO

Circ. P.G.R. 8 maggio 1996 n. 7/LAP - D.G.R. n. 45-6656 del 15/07/2002

ELABORATO

A8

CARTA DELLE OPERE IDRAULICHE CENSITE - scale varie

CONSORZIO FORESTALE ALTA VALLE SUSA

Via Pellousiere n°6 OULX (TO) C.A.P. 10056

Tel 0122 - 831079 Fax 0122 - 831282 E.MAIL cf.avs@tin.it

P.iva 03070280015 - C.F. 86501390016

- AREA BACINI MONTANI -



CODICE DOCUMENTO

area	anno incarico	n.commissa	revisione	n. elaborato	n. archivio
0 3	2 0 0 7	0 3 4	0 0	A 8	1 2 3 9

Motivo revisione :

OTT. 12

Dott. Geol. Zeno Vangelista

DATA

REDATTO DA:

OTT. 12

Dott. For. Alberto DOTTA

Dott. For. Alberto DOTTA

DATA

PROGETTISTA e R.D.D.

RESPONSABILE DI COMMESSA

COMMITTENTE



COMUNE DI OULX

Piazza Garambois n°1 C.a.p. 10056

Tel. 0122 - 831102

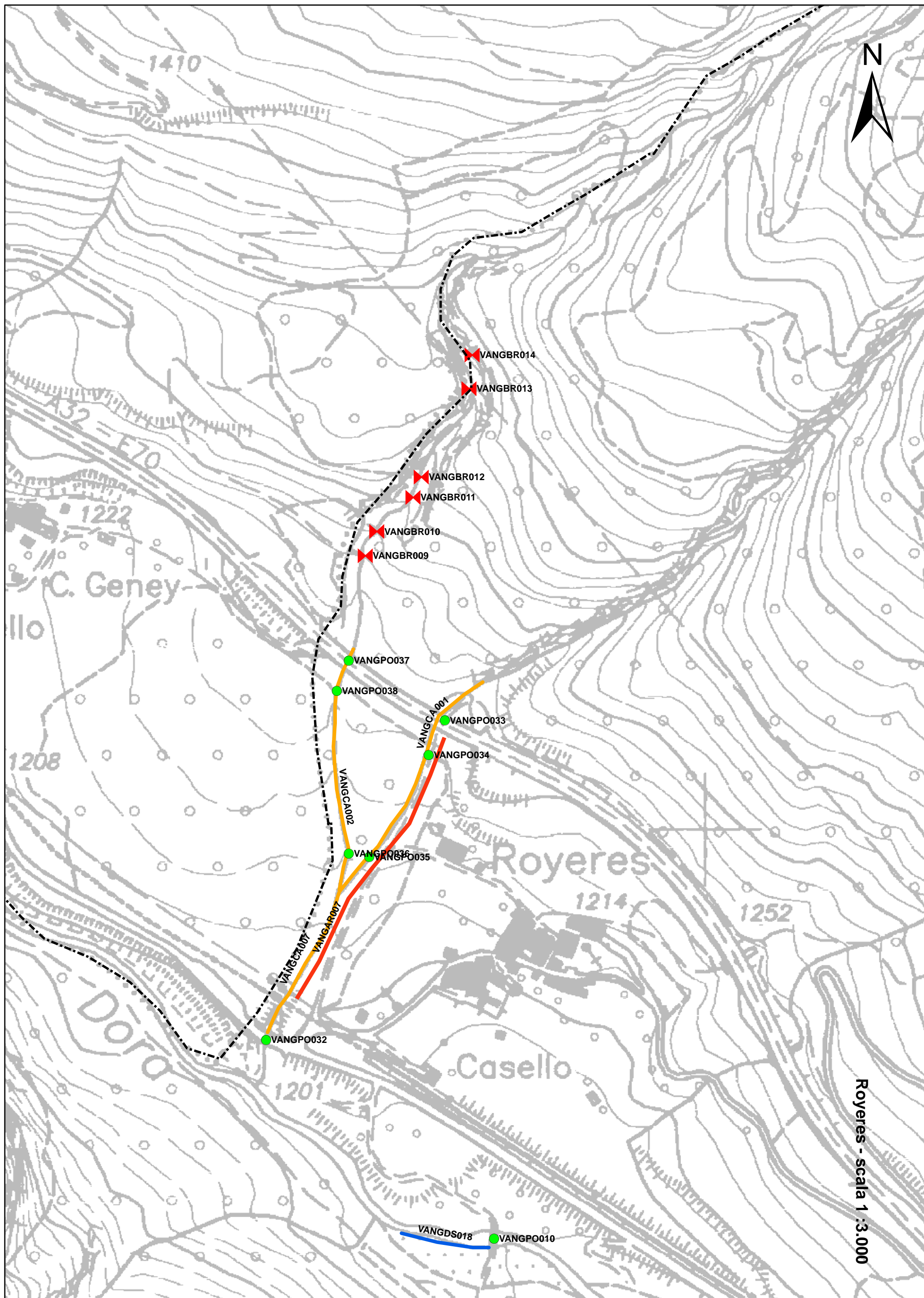
Fax 0122 - 831232

E.MAIL tecnico@comune.oulx.to.it

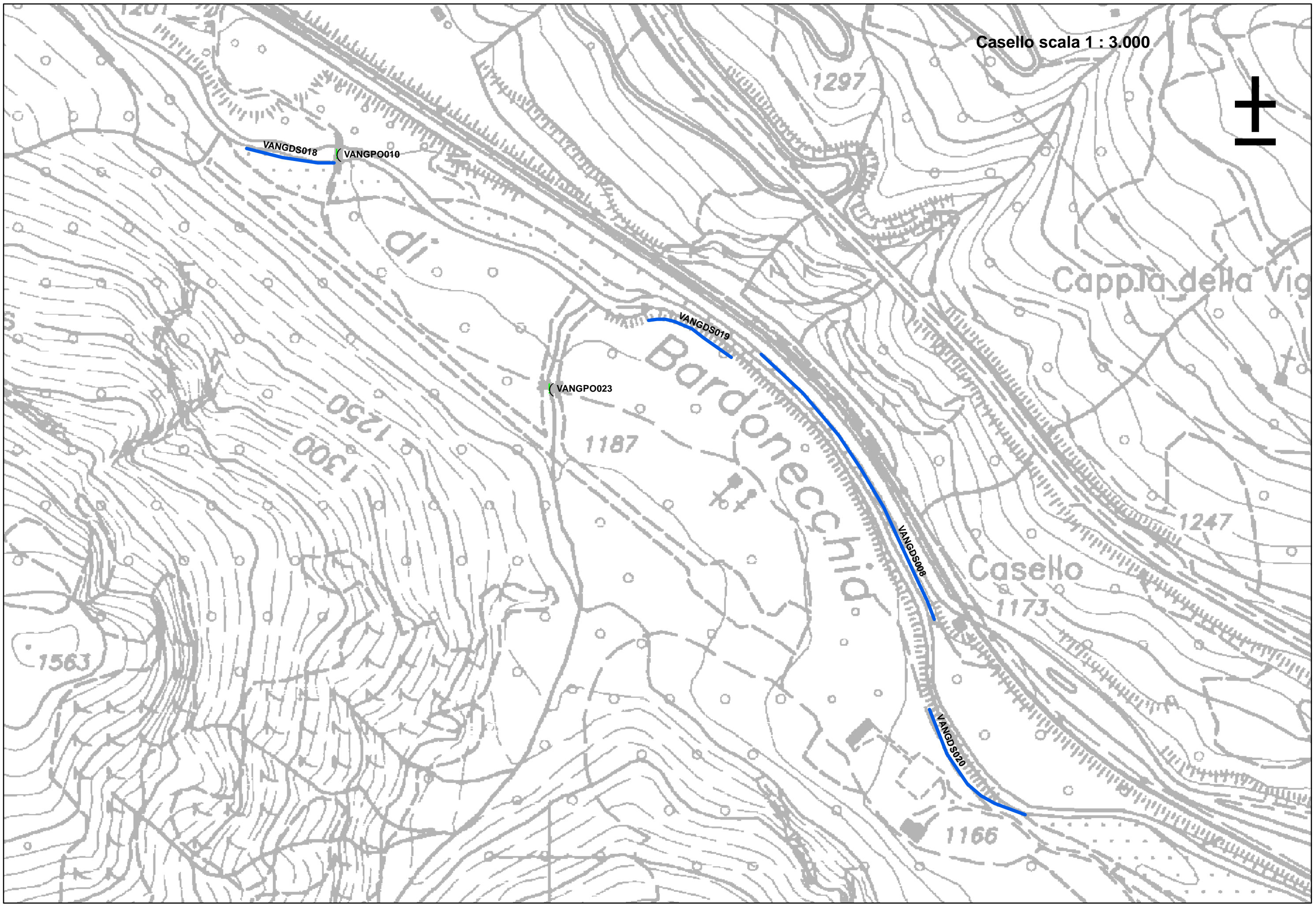
VISTO IL RESPONSABILE DEL PROCEDIMENTO:

INDICE

Royeres	scala 1 : 3.000	pag. 2
Casello	Scala 1 : 3.000	pag. 3
Puy	Scala 1 : 5.000	pag. 4
Rio San Giusto	Scala 1 : 3.000	pag. 5
Beaulard – San Giusto	Scala 1 : 3.000	pag. 6
Chateau Beaulard	Scala 1 : 3.500	pag. 7
Beaulard – Rio Champeyron	Scala 1 : 3.000	pag. 8
Case Blanc	Scala 1 : 3.000	pag. 9
Costans	Scala 1: 3.000	pag. 10
Savoulx – Rio Joans	Scala 1 : 3.000	pag. 11
Signols – Cave Gesso	Scala 1 : 3.500	pag. 12
Rio Vazon	Scala 1 : 5.000	pag. 13
Oulx Abbazia	Scala 1 : 5.000	pag. 14
Oulx Prà Veil	Scala 1 : 3.000	pag. 15
Oulx Ange Gardien	Scala 1 : 3.000	pag. 16
Oulx Sotto la Rocca	Scala 1 : 3.000	pag. 17
Oulx Moretta	Scala 1 : 3.000	pag. 18
Rio Nero Amazas	Scala 1 : 3.000	pag. 19
Rio Nero – Malafosse	Scala 1 . 3.000	pag. 20
Santa Maddalena	Scala 1 : 3.000	pag. 21
Pont Ventoux	Scala 1 : 3.000	pag. 22
Seguret – Casermette	Scala 1 : 2.000	pag. 23
Rio Gran Comba del Gad	Scala 1 : 3.000	pag. 24
Monfol	Scala 1 : 3.500	pag. 25
Jafferau 1	Scala 1 : 3.500	pag. 26
Jafferau 2	Scala 1 : 3.500	pag. 27
Jafferau 3	Scala 1 : 3.500	pag. 28



Casello scala 1 : 3.000



VANGDS018

VANGPO010

VANGDS019

VANGPO023

VANGDS020

VANGDS021

di

Bardonecchia

Cappella della Vig

Casello

1563

1300
1250

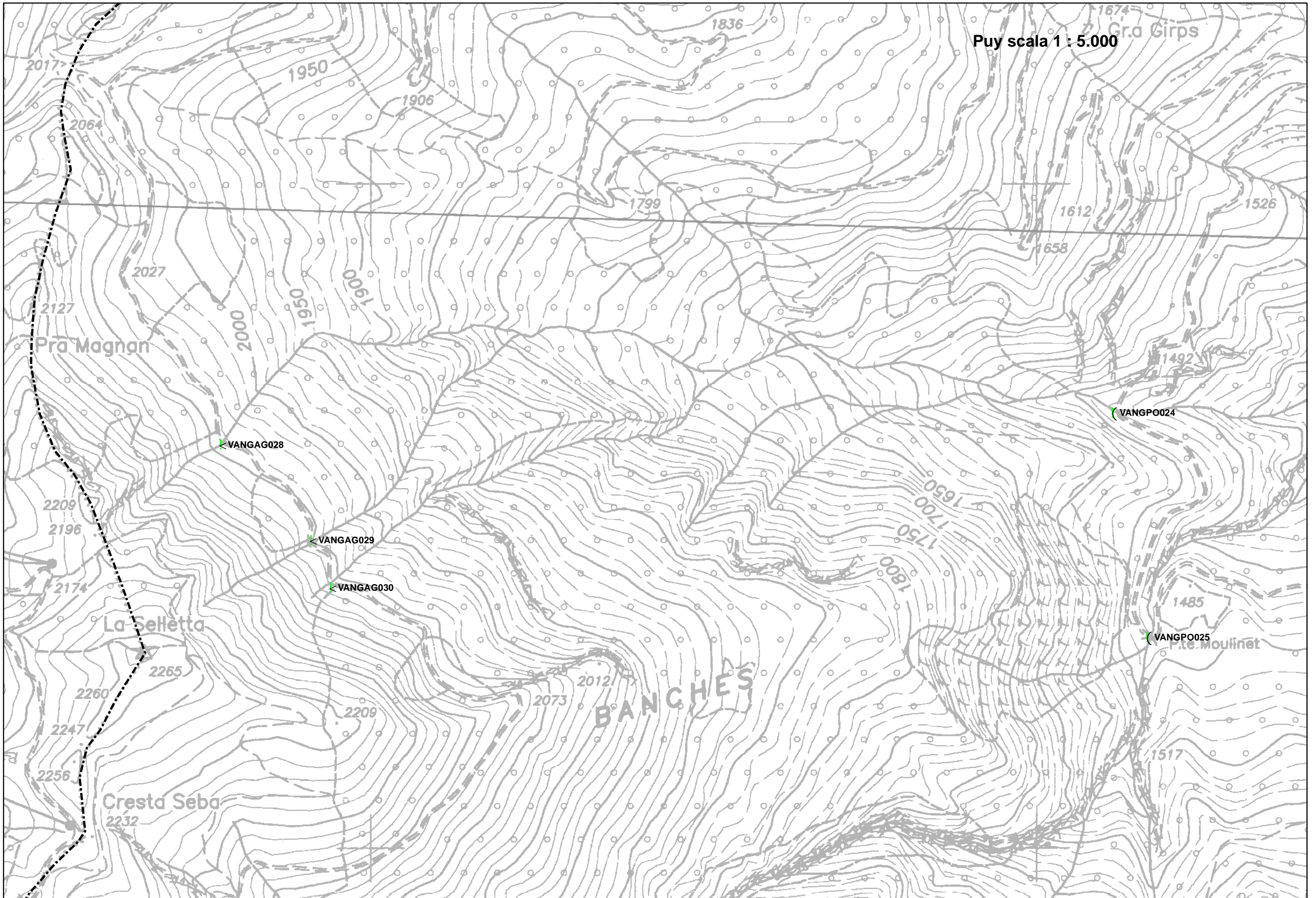
1187

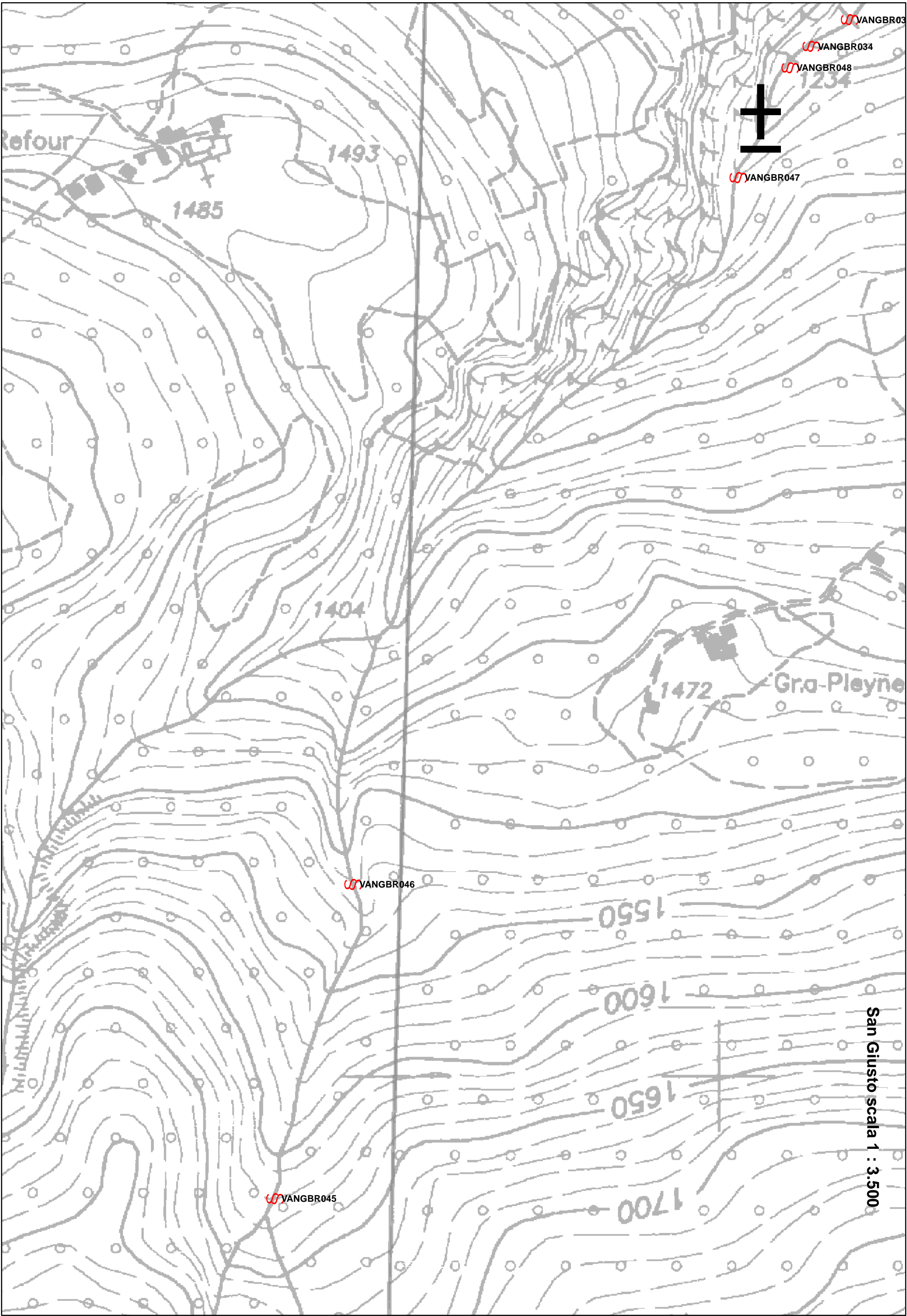
1297

1247

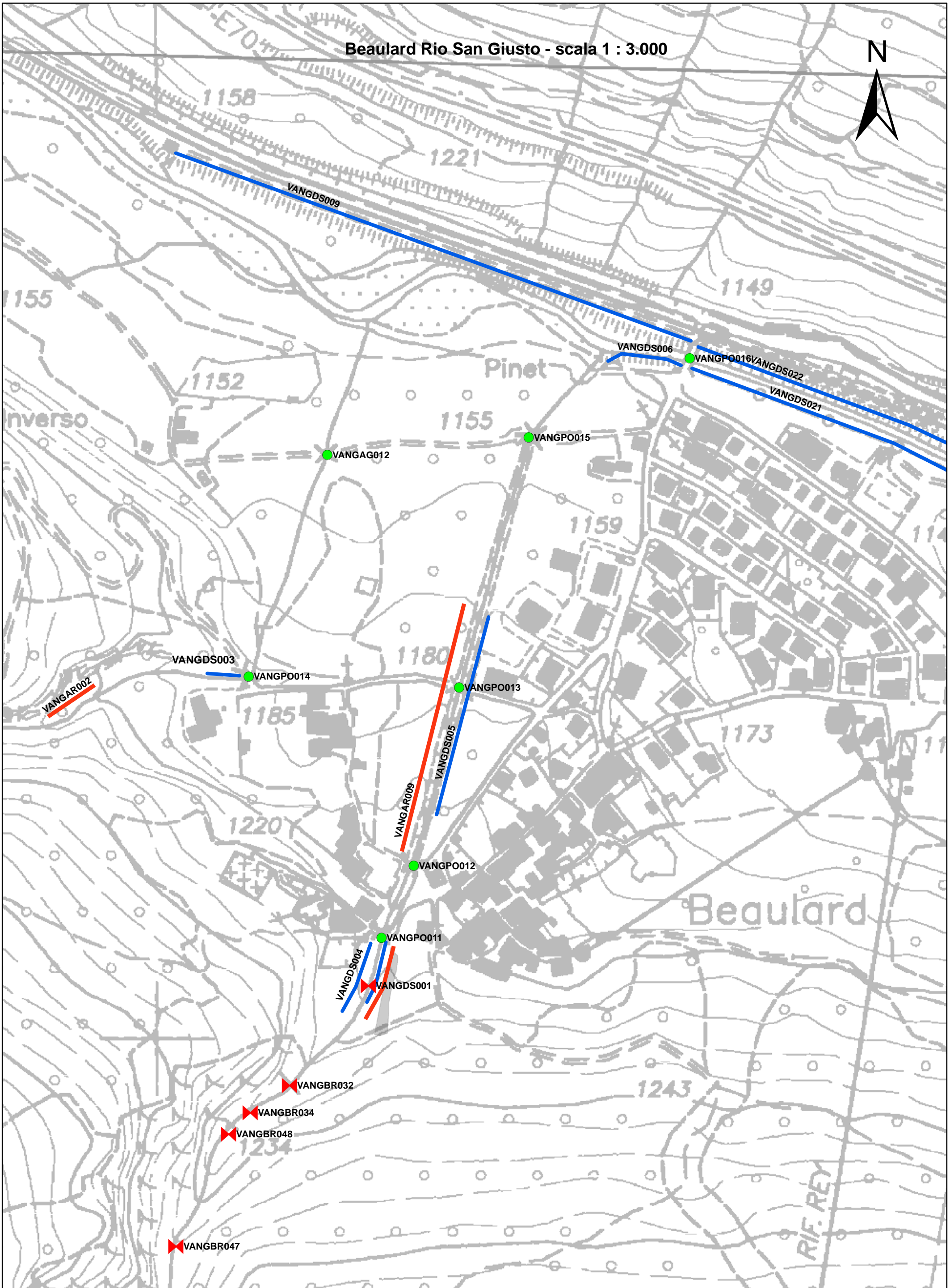
1173

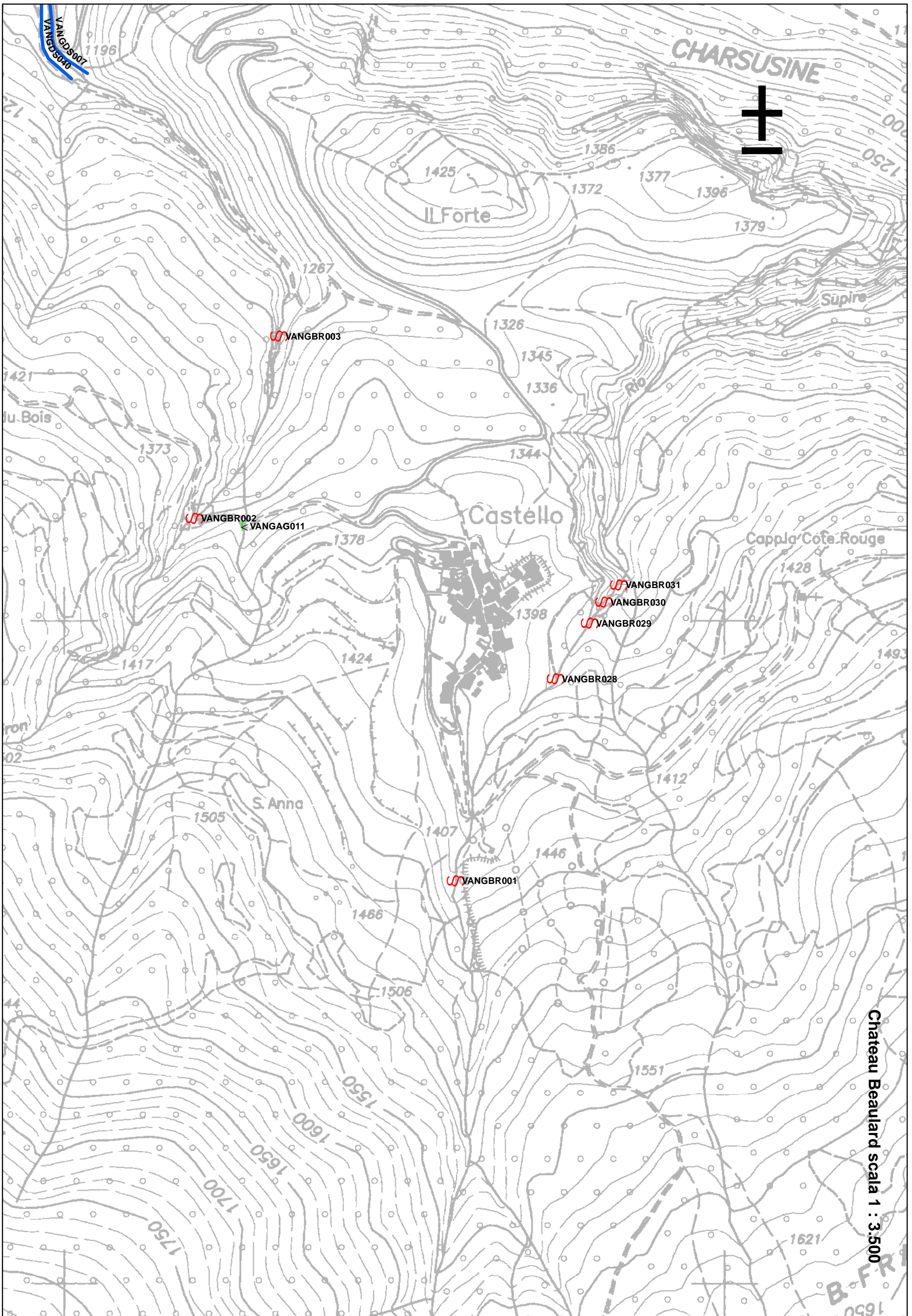
1166



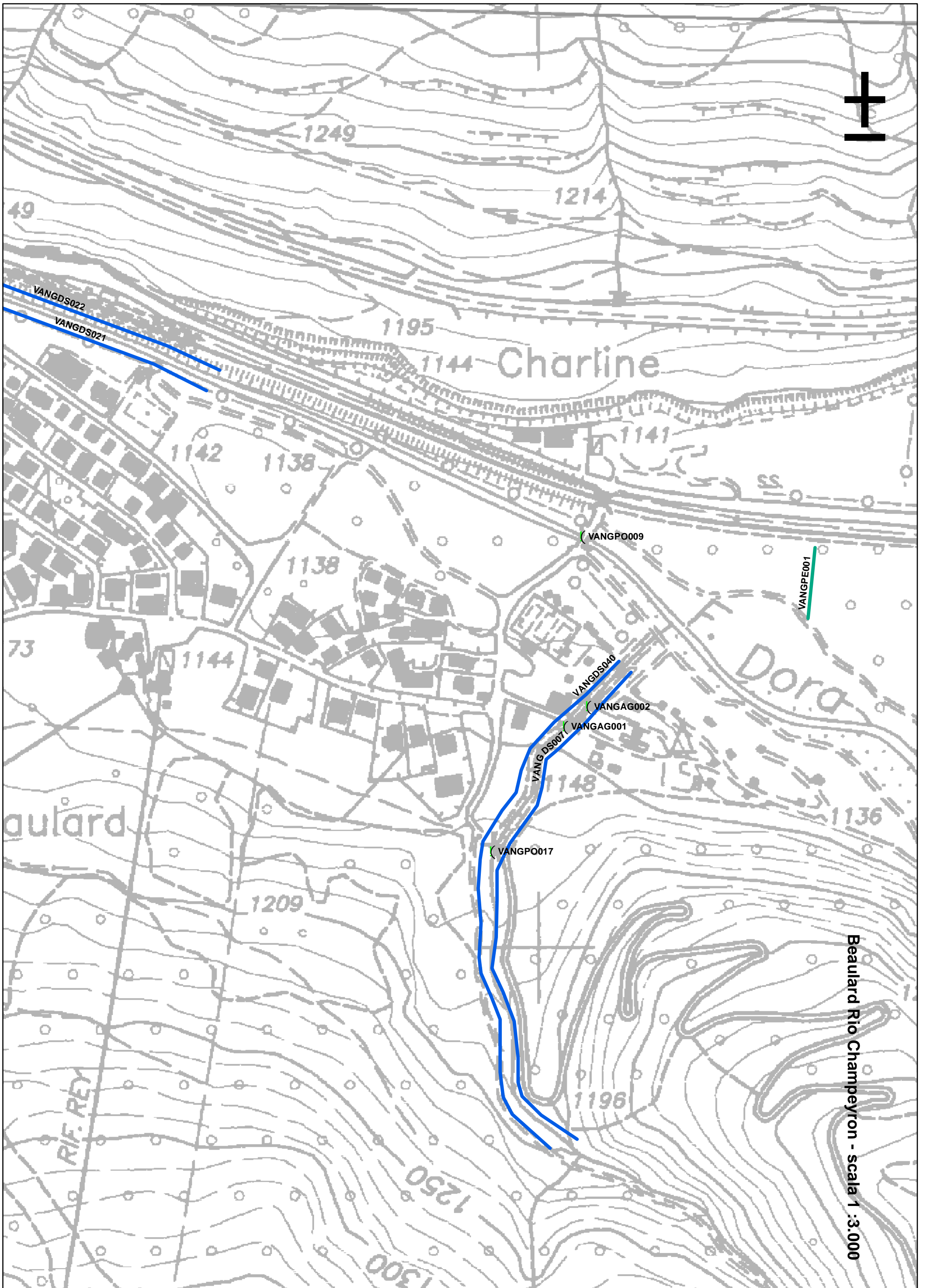


Beulard Rio San Giusto - scala 1 : 3.000

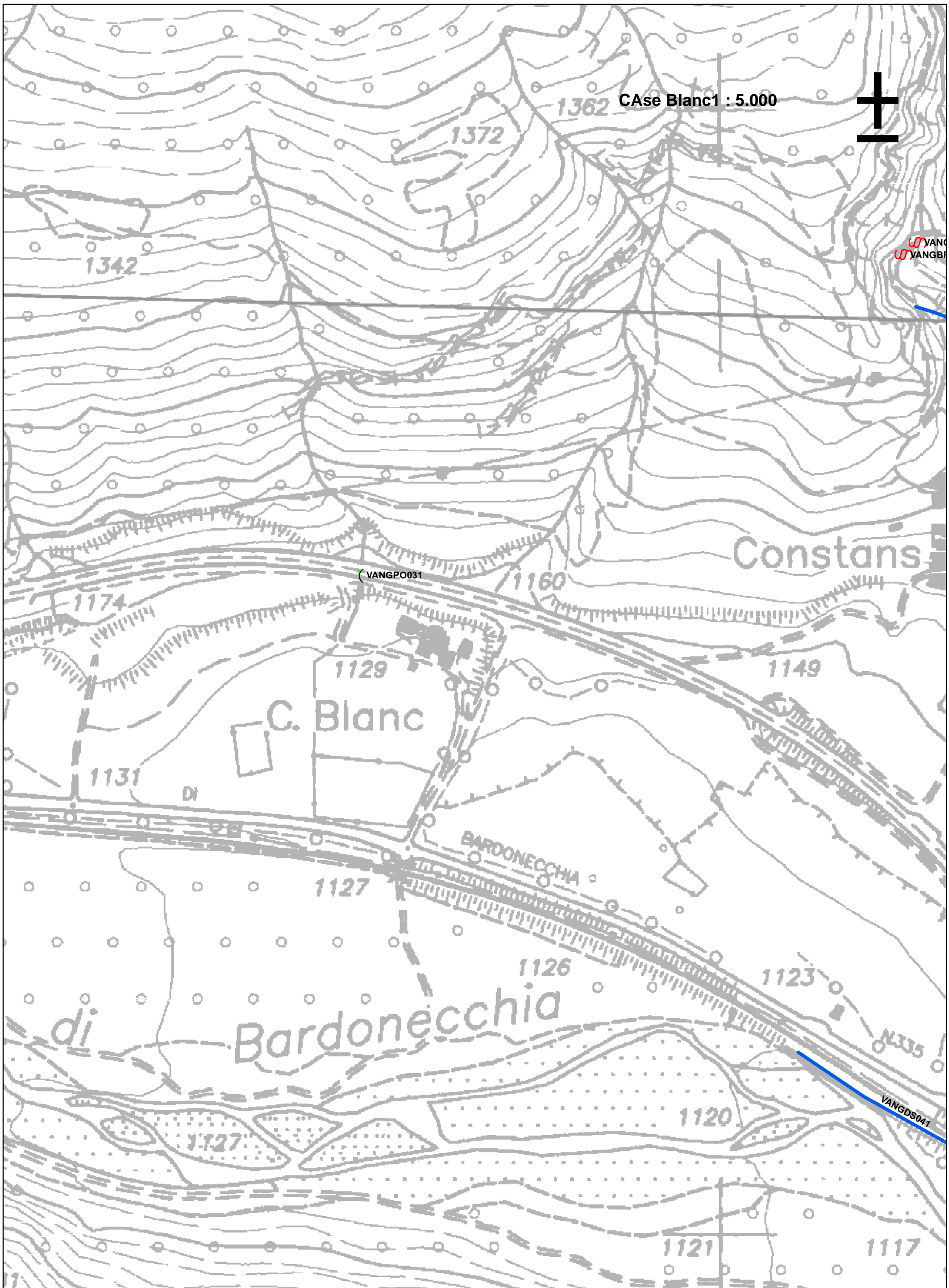


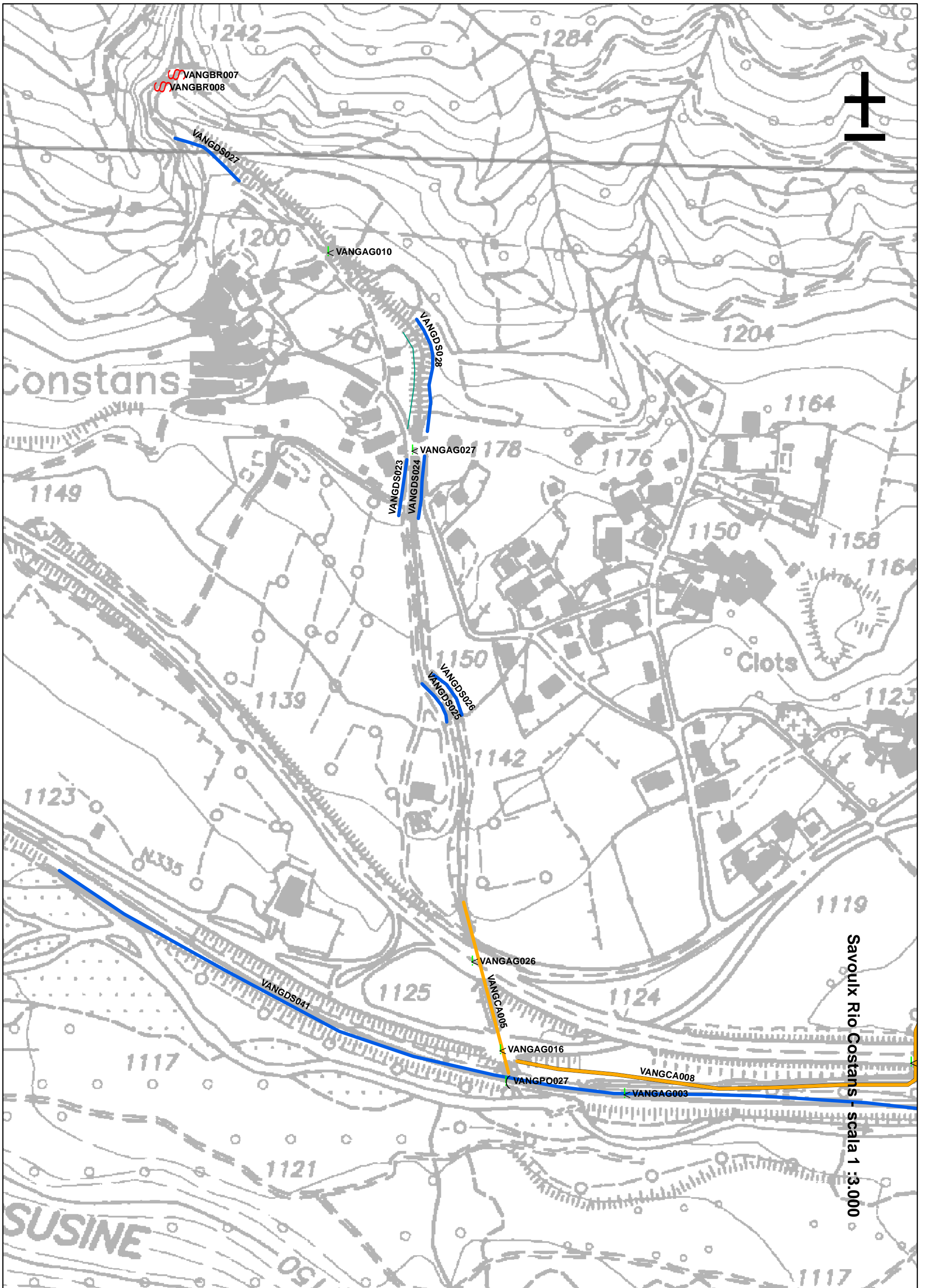


Chateau Beaulard scala 1 : 3.500

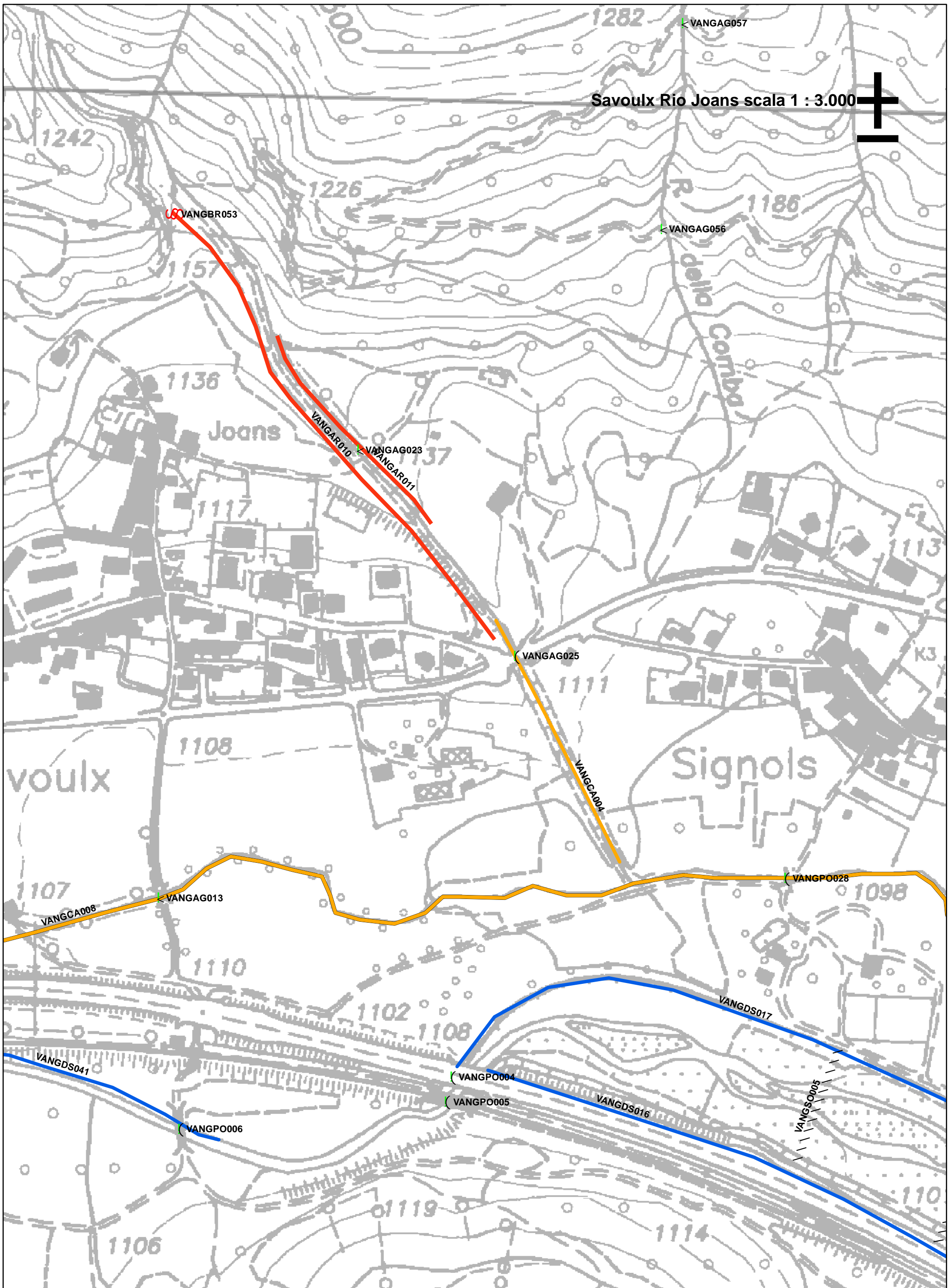


Beaulard Rio Champeyron - scala 1 : 3.000





Savouix Rio Costans - scala 1 : 3.000



Savoulx Rio Joans scala 1 : 3.000



VANGBR053

VANGAG057

1242

1226

1282

1186

1136

Joans

VANGAR010

VANGAG023

VANGAR011

R. della Comba

1117

VANGAG025

1111

K3

Signols

1108

voulx

VANGPO028

1107

VANGAG013

VANGCA008

1098

1110

1102

1108

VANGDS017

VANGDS041

VANGPO004

VANGPO005

VANGDS016

VANGS0003

VANGPO006

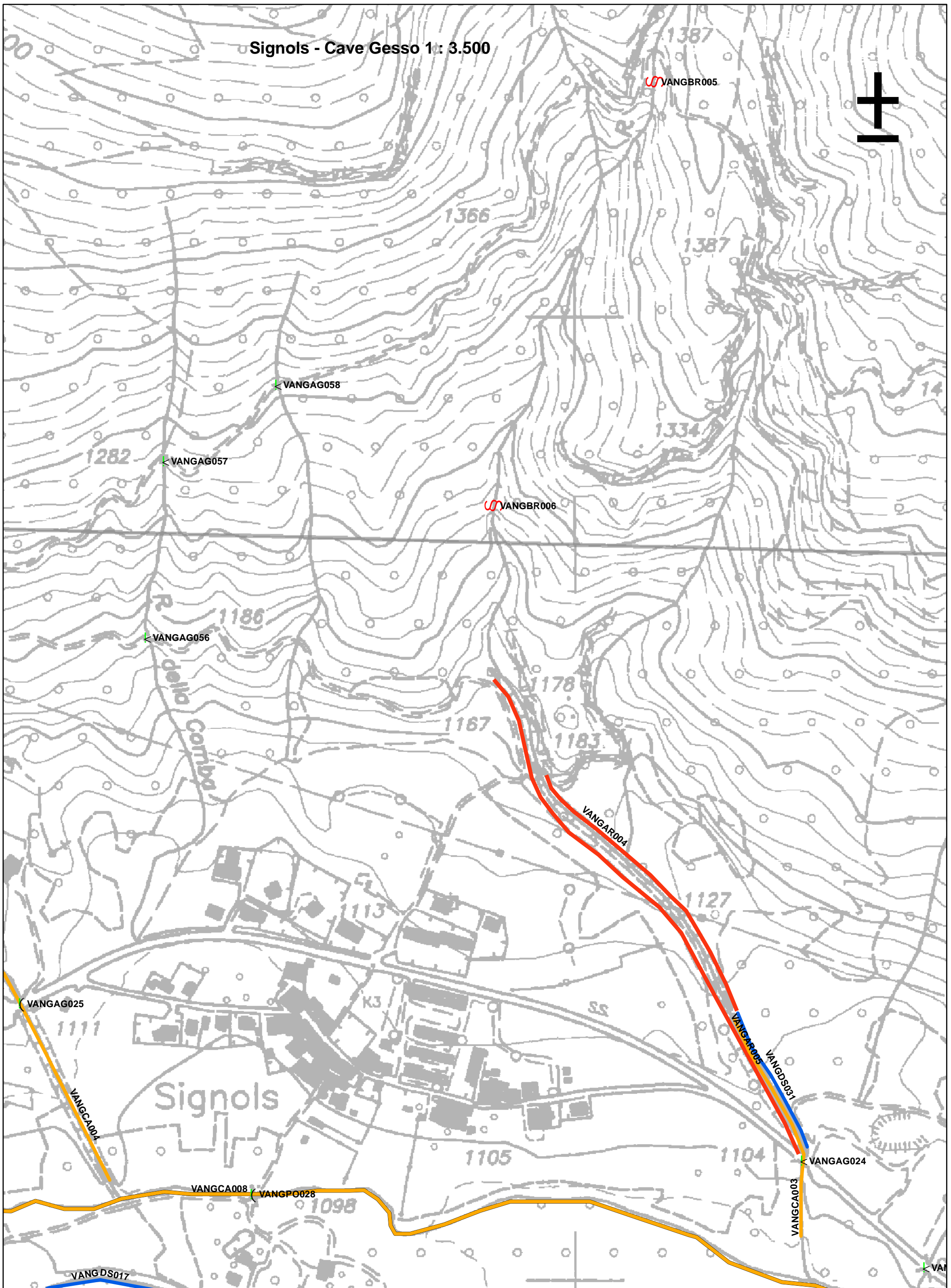
1119

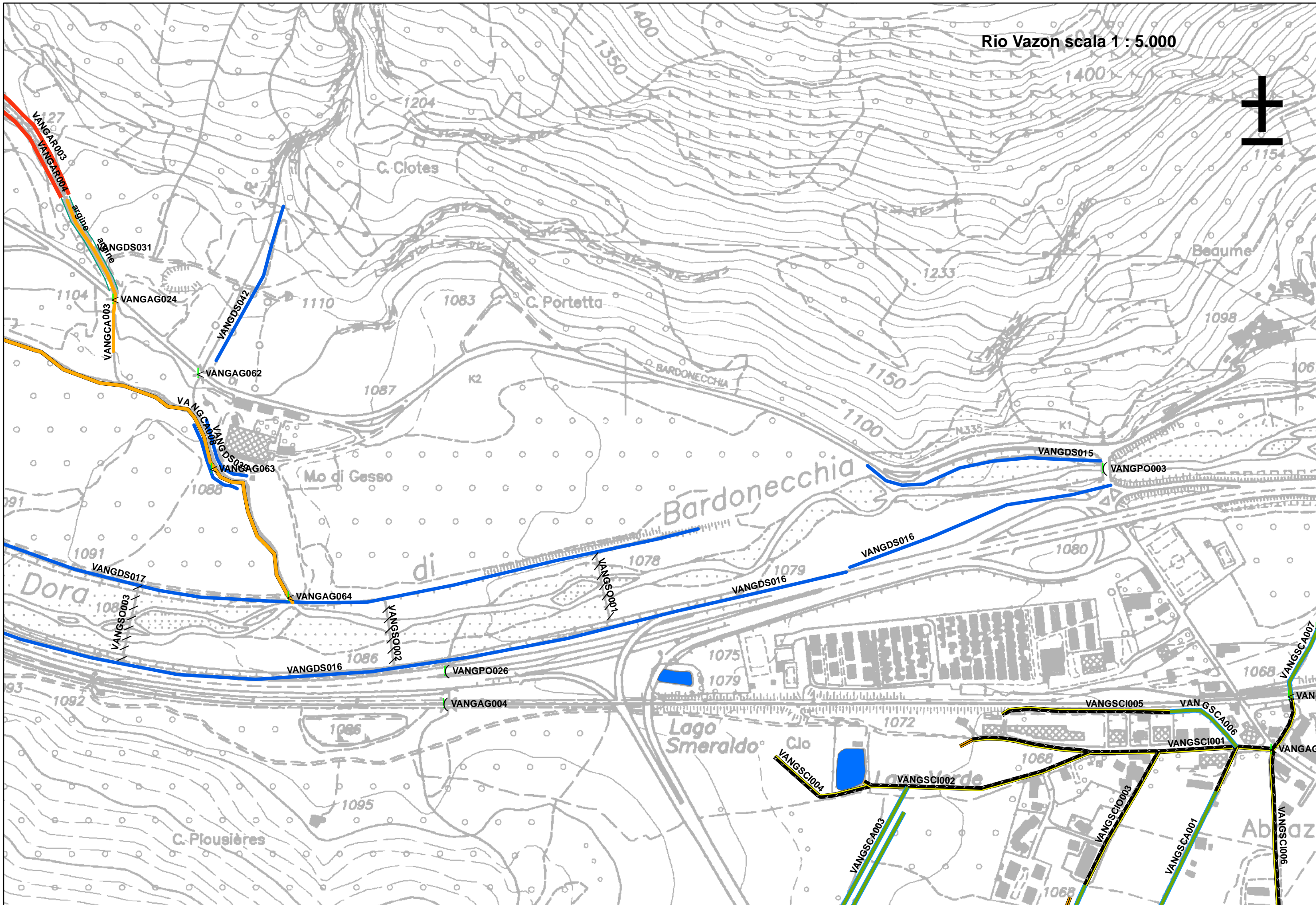
1114

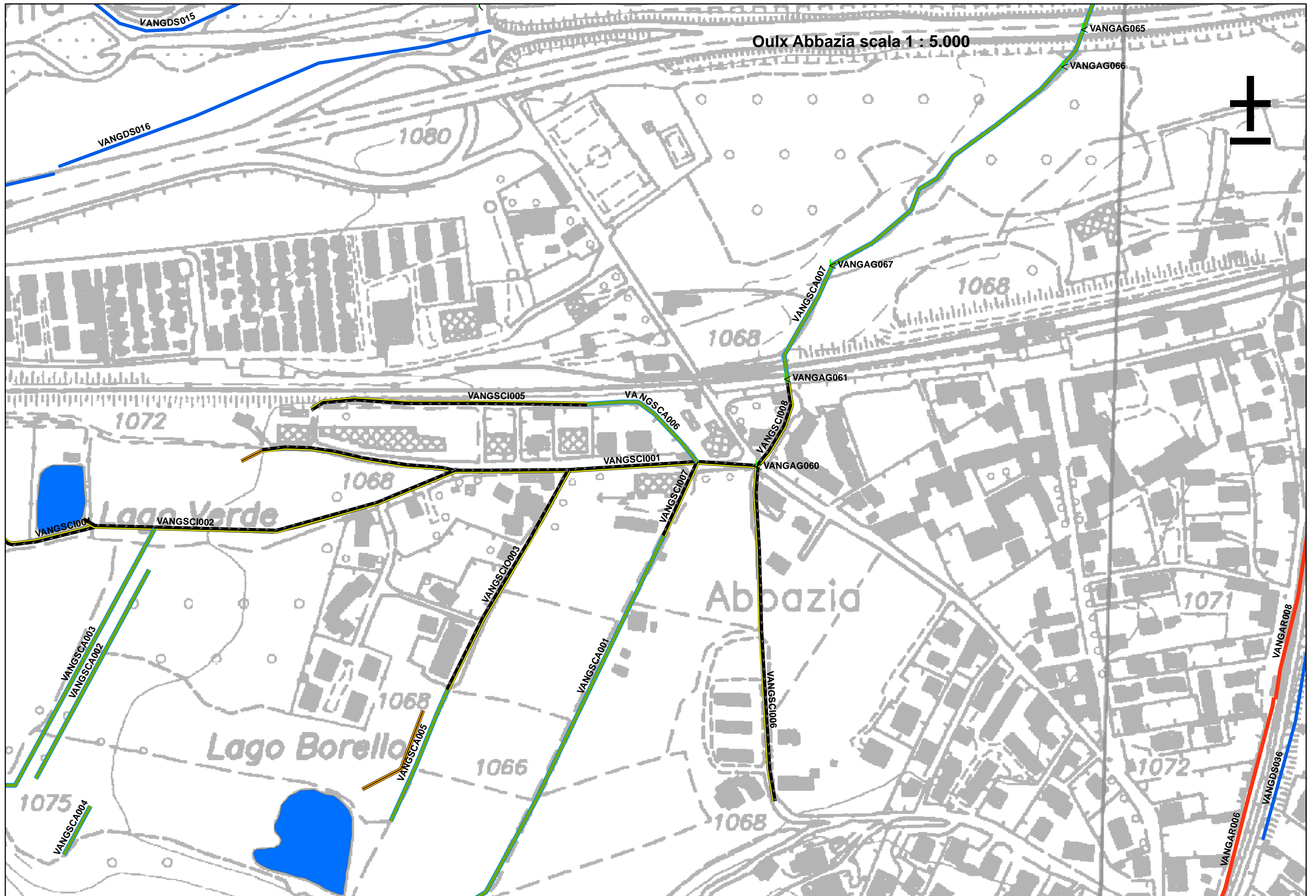
1106

1110

Signols - Cave Gesso 1: 3.500

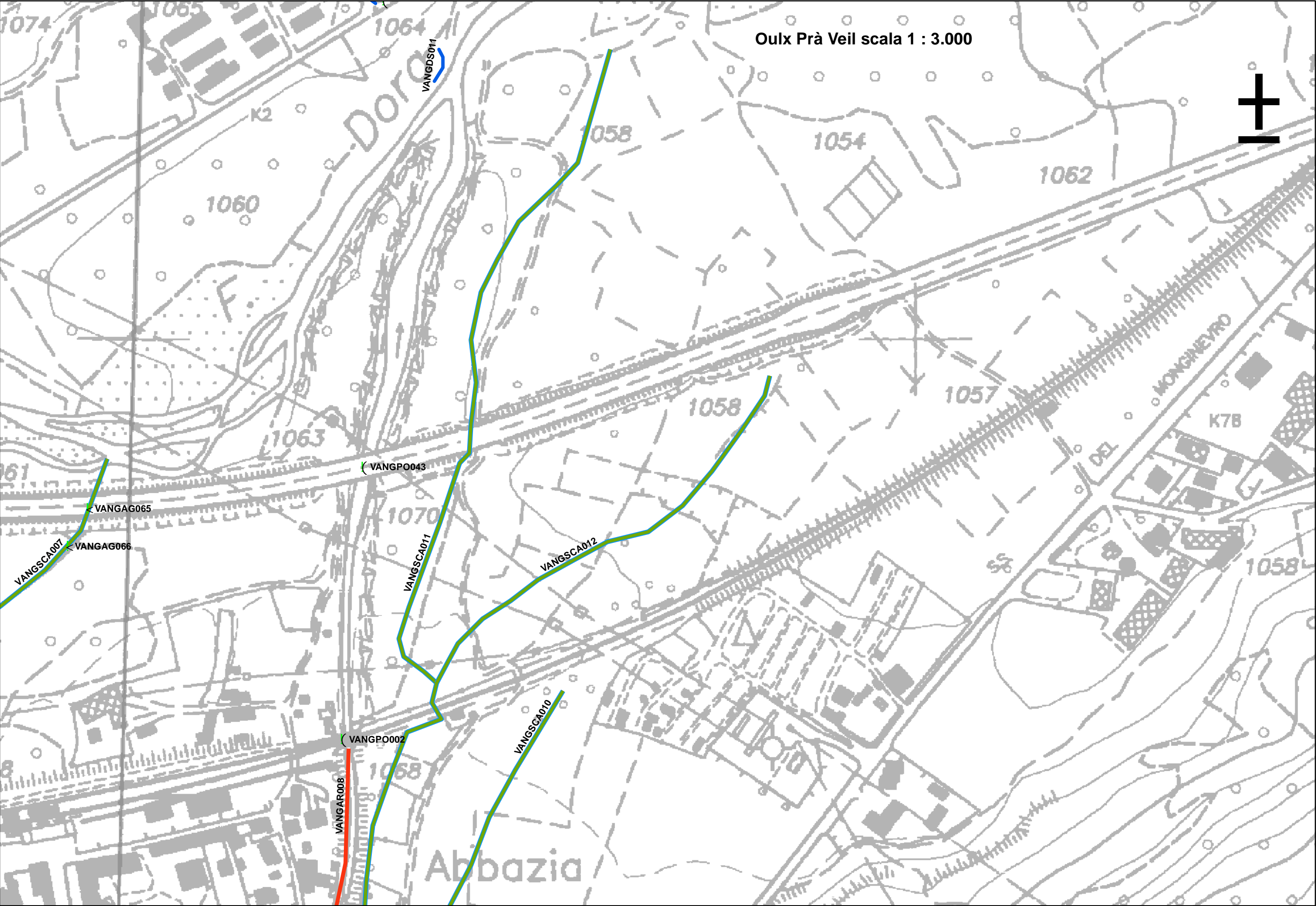


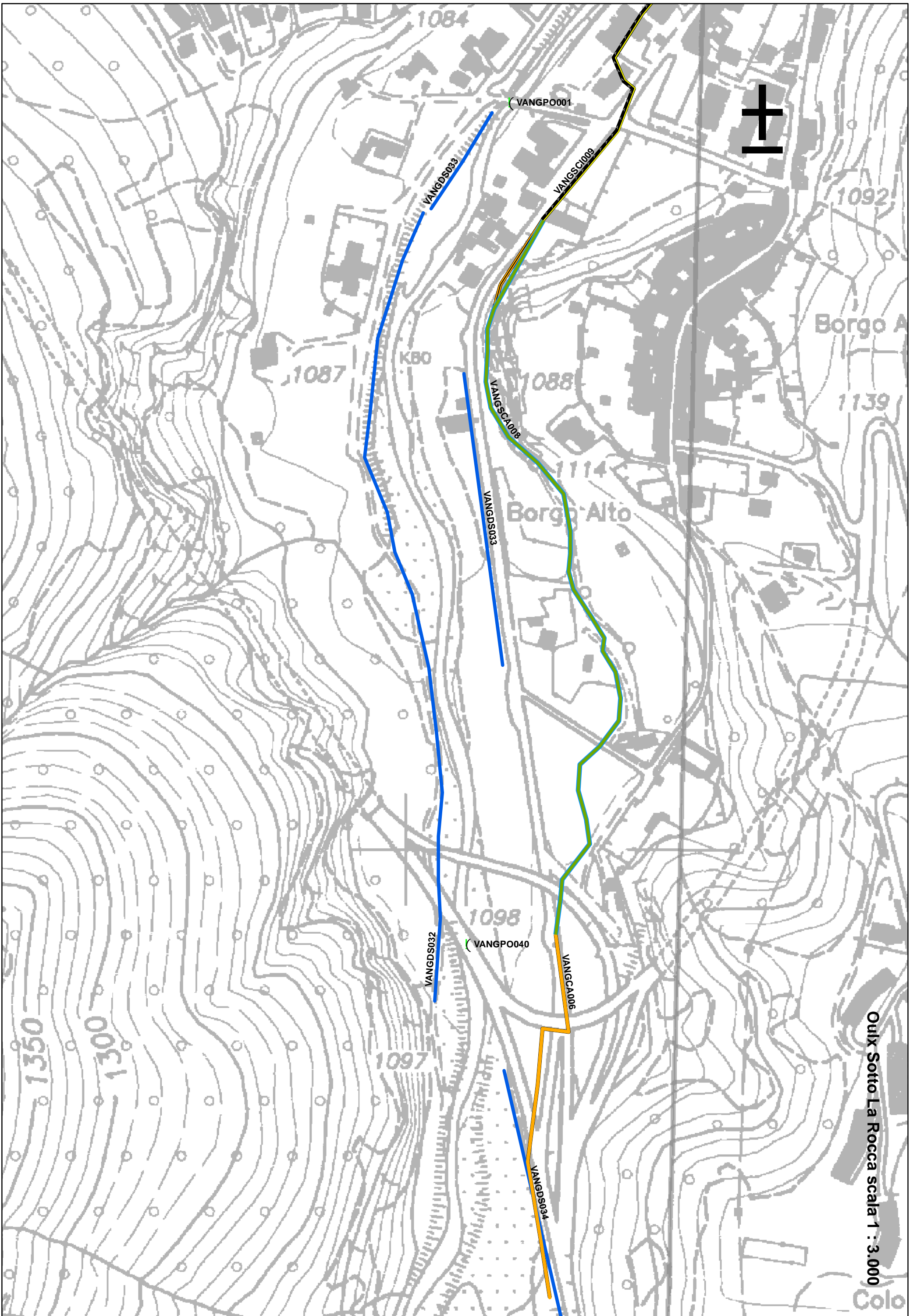


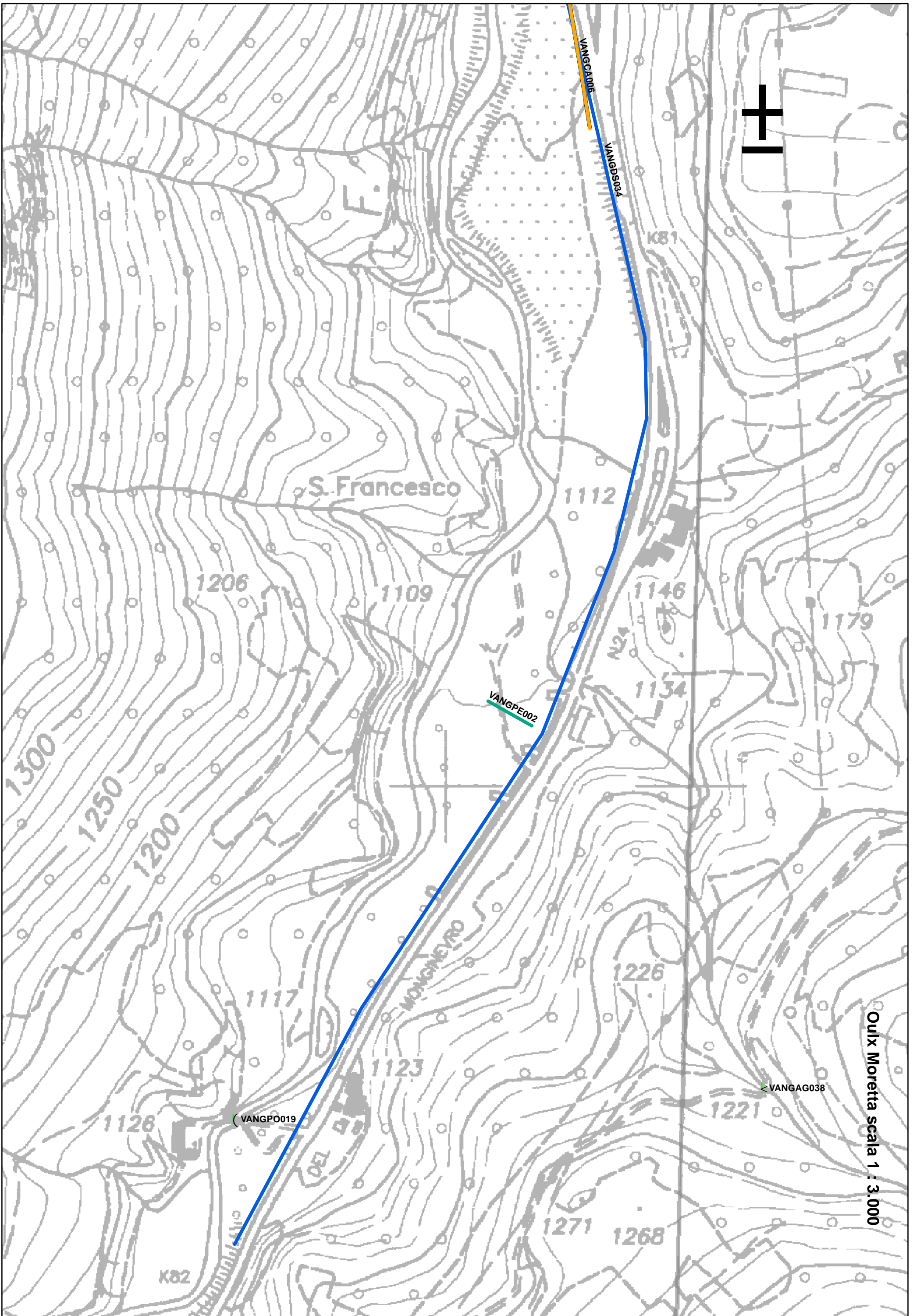


Oulx Abbazia scala 1 : 5.000

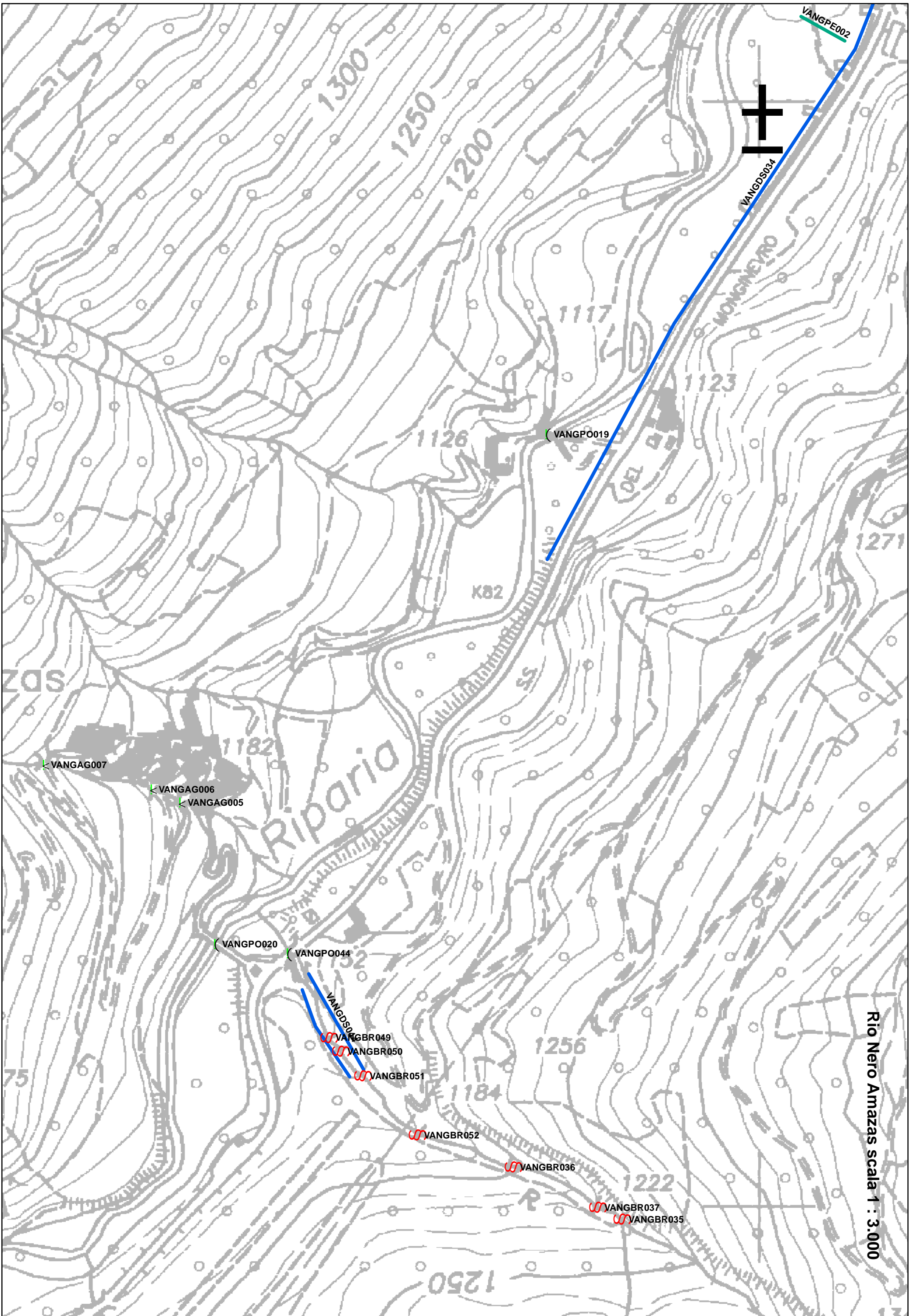




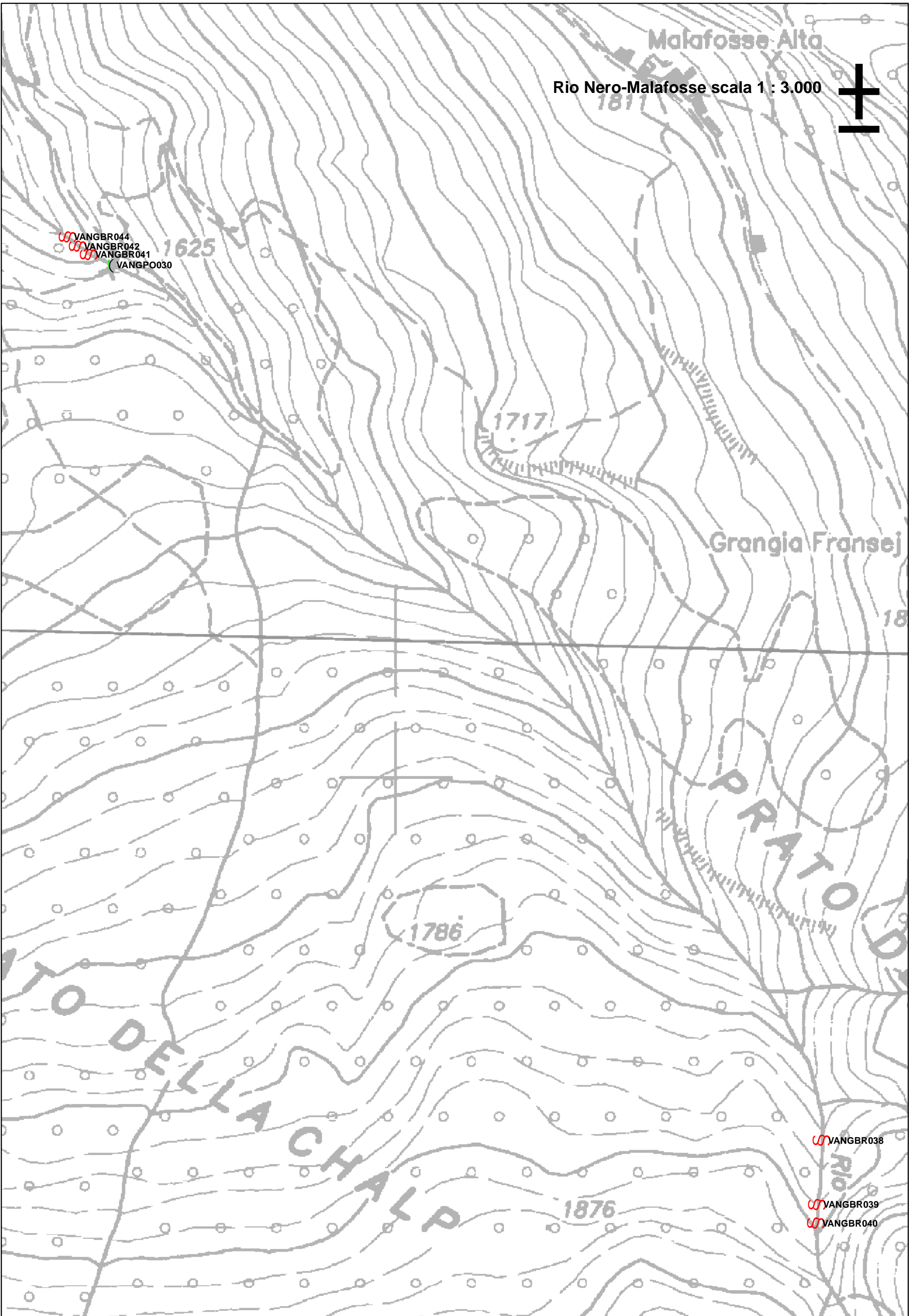


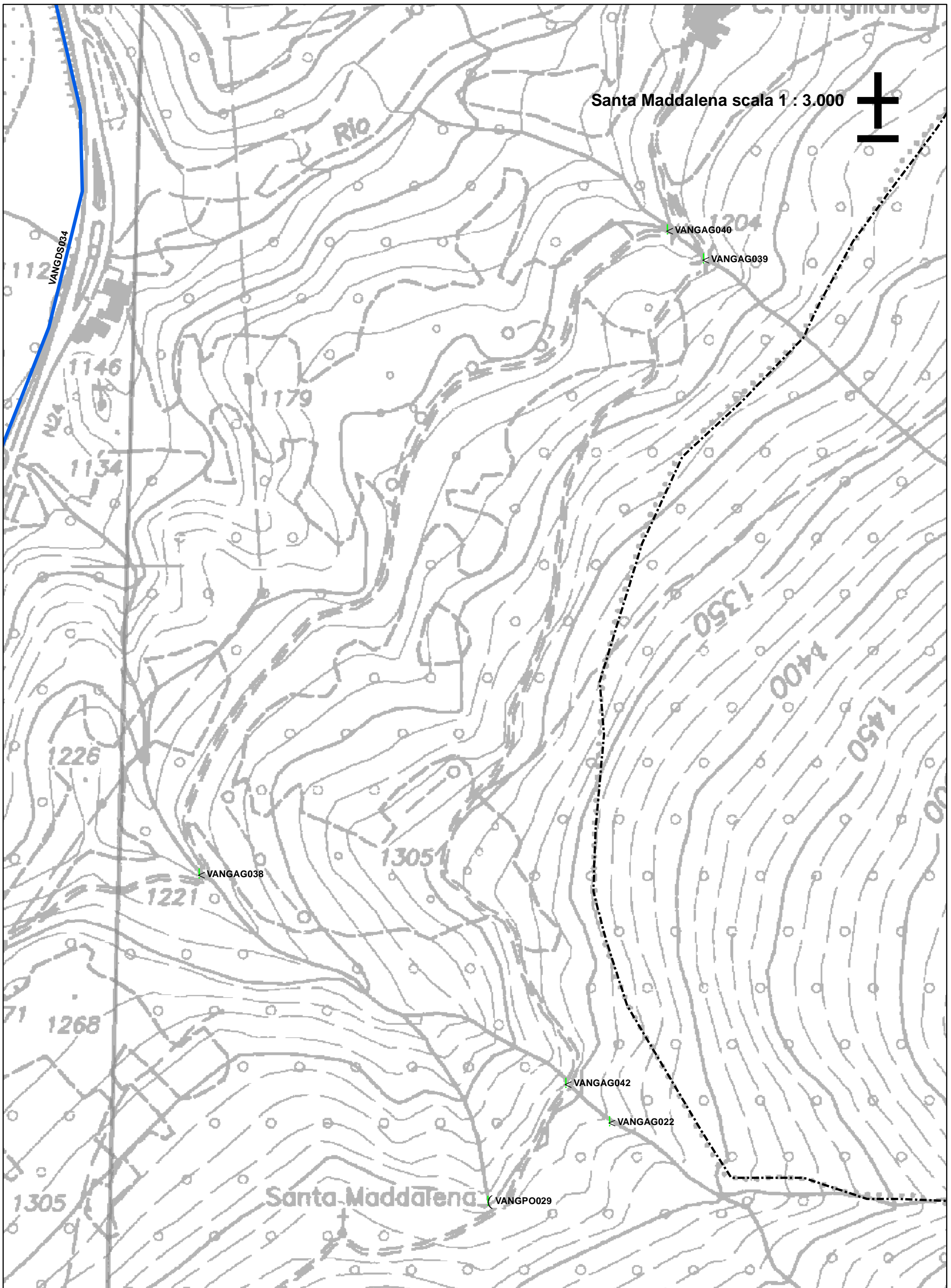


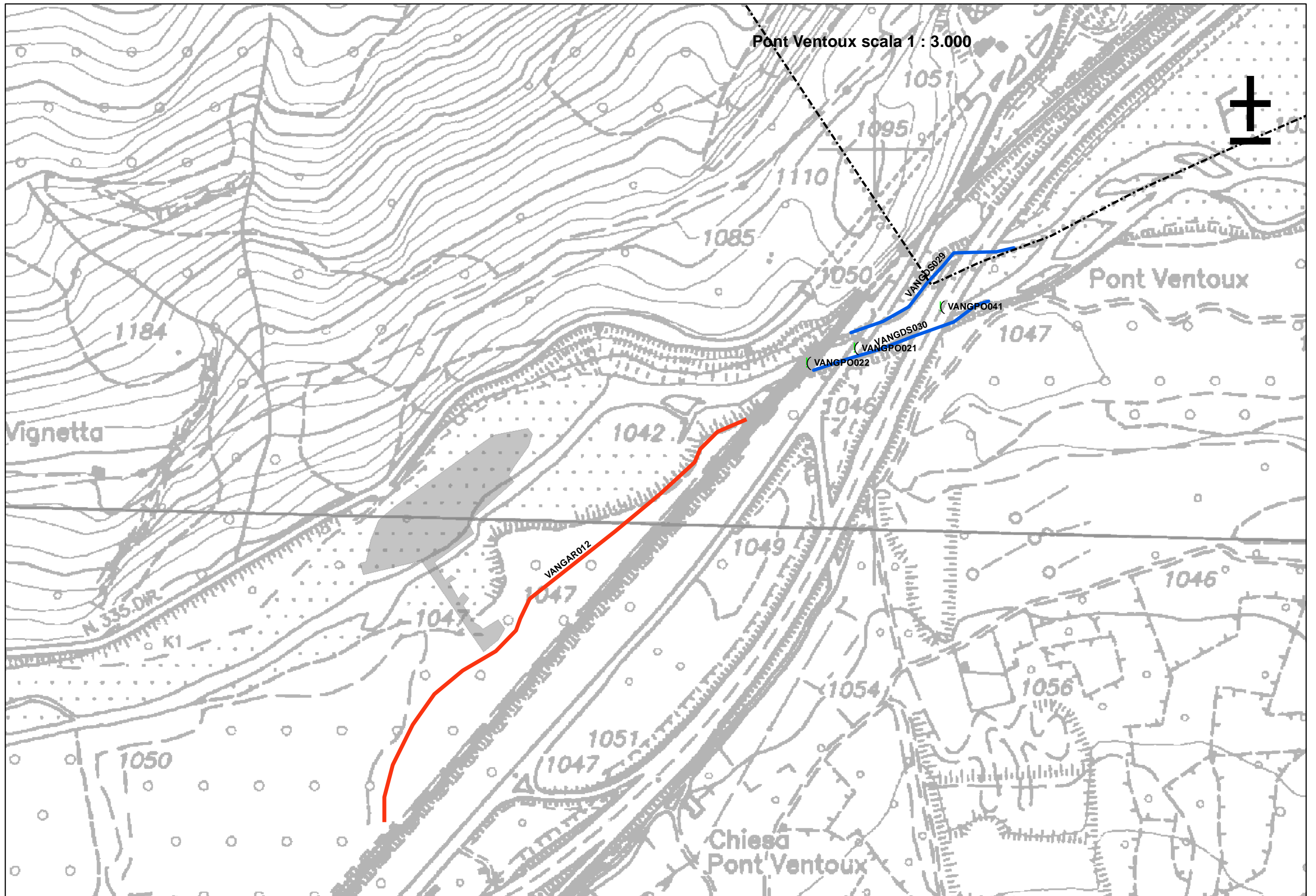
Quix Moretta scala 1 : 3.000



Rio Nero Amazás scale 1 : 3.000







Seguret-Casermette 1 : 2.000



1206

1123

133

VANGBR004

1081

VANGAR003

VANGDS012

VANGDS013

(VANGPO039)

1065

1064

VANGDS011

K2

DORO

VANGSCA011

1058

1060

